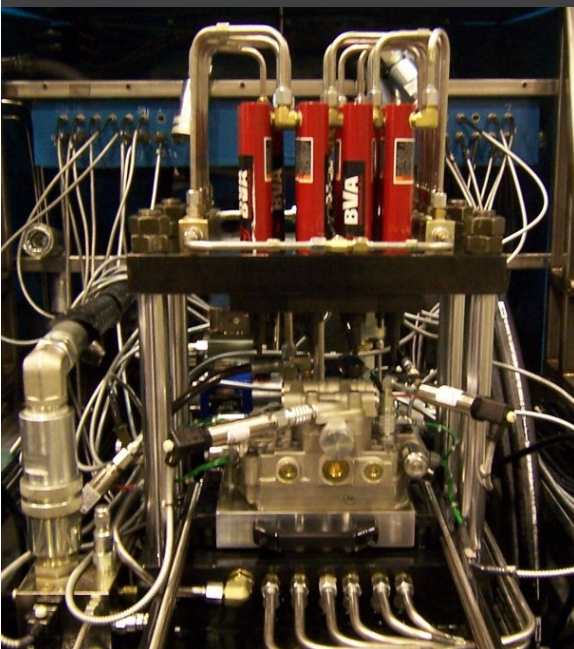




INDUSTRIES

- ⇒ AEROSPACE
- ⇒ AGRICULTURE
- ⇒ AUTOMOTIVE
- ⇒ CONSTRUCTION
- ⇒ DRILLING
- ⇒ MINING
- ⇒ OIL & GAS



INNOVATIVE SOLUTIONS & SERVICES FOR YOU

MAINTENANCE

REN can schedule machine inspections and provide preventive maintenance to keep your test equipment reliable and in service.

CALIBRATION

Our service team will keep your machine properly calibrated and accurate.

REPAIR & REBUILD

REN's service department can satisfy your need for machine repair. Whether it's a scheduled appointment or a sudden emergency, we make your needs our priority. As part of the Schmidt Kranz Group, our global presence means we have a solution no matter where your company chooses to manufacture.

If your machine has reached the end of its effective service life, you may be interested in retrofitting new motors, controls, sensors or safety systems. REN has years of experience rebuilding, reconfiguring, and upgrading old equipment.

SPARE & REPLACEMENT PARTS

REN can recommend and provide spare parts for your system so you have the parts you need to prevent costly downtime. REN can also provide emergency parts if you have a sudden line down.

CUSTOMER TRAINING

Informal training for your operators and staff is included during both the run-off and on-site validation phases with every REN test system.

Additionally, REN can provide formal training sessions, which would include a written curriculum and a structured class format.

EMERGENCY SUPPORT

REN can provide emergency phone support to prevent unwanted downtime. And if your machine is configured with remote access, we can log-in and troubleshoot the system with you.

EQUIPMENT UPGRADES

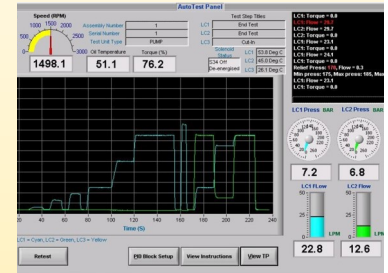
As your company introduces new product models, variations or options, REN can assist you in modifying your equipment to handle your changing needs.

Software upgrades are tailored to your company and easily installed by your own technicians. Or if you prefer, REN can also facilitate these changes.

TEST CONSULTING

REN can assess your production needs and review new or upcoming product lines to best recommend the most appropriate equipment solutions. This might include adding new test systems as well as upgrading or retrofitting your current machines.

With over 40 years of industry experience, we can help your development team establish and optimize your test specifications.



PUMP / MOTOR TESTING

- Warm-Up
- Break-In / Cut-In
- Displacement Verification
- Mechanical Efficiency
- Volumetric Efficiency
- Total Efficiency
- Starting Performance
- Elevated Temperature
- Cold Start
- Endurance
- Pressure Cycle
- Leak
- Relief Valve
- Priority Valve
- Solenoid Valve
- Brake

VALVE TESTING

- Leak
- Proof
- Functional
- Pressure Drop
- Relief Valve
- Proportional Valve
- Check Valve
- Directional Valve
- Servo Valve

HIGH PRESSURE TESTING

- Proof
- Burst
- Leak
- Impulse
- Flex



PROVEN EXPERTISE IN TESTING

As a leader in automated industrial test equipment, REN represents the highest value for efficient quality assurance testing. REN is a leader in automated industrial test equipment. With over 40 years of experience in designing and manufacturing computer aided test equipment, our exposure to many worldwide component manufacturers and a deep understanding of testing has allowed us to develop standardized test equipment that can be optimized to satisfy both current and future production needs.

IN-HOUSE TESTING

Only with production-accompanying examinations of manufactured components can quality be maintained at the highest level. REN now provides a new avenue for quality testing and performance verification at both the development and production stages. Combined with an audit sampling program, our in-house testing service can help you identify manufacturing defects and deviations or other similar influences prior to distribution of parts, preventing costly recall actions.

Expected Benefits

- We'll work with you to develop a robust testing procedure for your components.
- We can assist in designing both practical and sophisticated fixture assemblies.
- Our sophisticated testing processes ensure reproducible and consistent results.
- We'll use our long-term experience and competence in hydraulics and test technologies to shorten your product development cycles.
- We can perform vital development-level testing on short notice.
- If your future needs evolve, we'll use our gained experience with your product line to build a custom test system that best suits your company's needs.

Specialty Testing Possibilities

- | | | |
|------------------------|--------------------|-----------------|
| • Transmissions | • Pressure Vessels | • U-Joints |
| • Filters | • Cylinders | • Transaxles |
| • Gearboxes | • Vibration | • PTOs |
| • Tubing/Fittings/Pipe | • Hydroforming | • Winches |
| • Hoses | • Autofrettage | • Environmental |

